

## Anti-Flag Tag Mouse Monoclonal Antibody

Catalog Number: YFMA0036; Size: 100 $\mu$ L

### Background:

Epitope tags are useful for the labeling and detection of proteins using immunoblotting, immunoprecipitation, and immunostaining techniques. Because of their small size, they are unlikely to affect the tagged protein's biochemical properties. The DYKDDDDK peptide has been used extensively as a general epitope tag in expression vectors. This peptide can be expressed and detected with the protein of interest as an amino-terminal or carboxy-terminal fusion.

### Product Information:

**Product name:** Anti-Flag Tag Mouse Monoclonal Antibody

**Isotype:** IgG1

**Form:** Liquid

**Tested applications:** WB, IP, IF

**Dilution Ratio:** WB: 1:1000-1:10000; IP:1:20; IF: 1:100-1:500

**Species reactivity:** Transfected

**Host Species:** Mouse

**Purity:** Affinity purification

### Immunogen Information:

**Immunogen:** Monoclonal antibodies are produced by immunizing mouse with synthetic peptide (DYKDDDDK), coupled to KLH.

**Molecular Weight:** Refer to figures

**Swiss Prot:** -

**Gene ID (NCBI) :** -

**Alternative Names :** DYKDDDDK Tag; Flag; FLAG.

### Storage:

Store at 4 ° C short term. Aliquot and store at -20 ° C long term. Avoid freeze/thaw cycles.

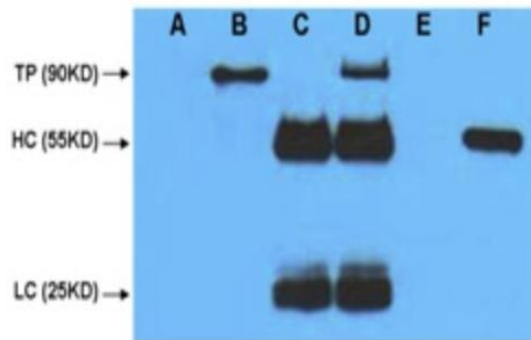
Buffer: PBS with 0.02% sodium azide, 50% glycerol, pH7.3.

### Service & Support:

- 1、 Please do not hesitate to contact us if you have any questions.
- 2、 Please fill in the Technical Support Request Form and email the form to support@yfxbio.com within 3months of receipt of the goods, and we will response to your inquiry within 24 hours.
- 3、 The after-sale service channel will be shut down after 3 months.
- 4、 Product has not been fully validated for medical applications. For research use only.

### Applications:

The application notes include recommended starting dilutions; optimal dilutions/concentrations should be determined by the end user.



A: HEK 293 cell lysate without transfected

B: HEK 293 cell lysate transfected with  
Falg-tag protein

C: IP (PBS + anti- Falg mAb 4°C overnight)

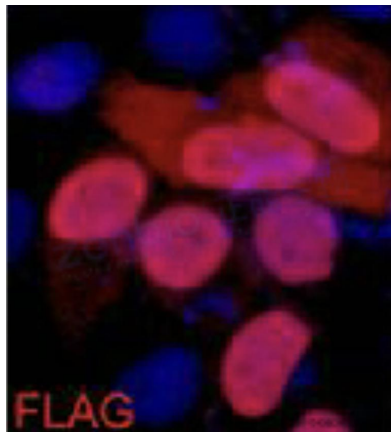
D: IP (HEK293 transfected+protein G+anti-  
Falg mAb 4°C overnight)

E: IP (HEK293 transfected+RIPA+Protein G  
4°C overnight)

F: Multi Tag Recombinant protein

(expressed in E.coli) TP=Target Protein

HC=Heavy chain LC=Light Chain



Immunofluorescence analysis of Flag Tag in 293  
cells transfected with a Flag tag protein using Flag  
Tag antibody(red),and DAPI (blue).