

## Anti-beta Actin Mouse Monoclonal Antibody

Catalog Number: YFMA0052; Size: 100 $\mu$ L

### Background:

beta-Actin is one of six different actin isoforms that have been identified. The actin molecules found in cells of various species and tissues tend to be very similar in their immunological and physical properties. Therefore, Antibodies against beta-Actin are useful as loading controls for Western Blotting. However it should be noted that levels of beta-Actin may not be stable in certain cells. For example, expression of beta-Actin in adipose tissue is very low and therefore it should not be used as loading control for these tissues.

### Product Information:

**Product name:** Anti-beta Actin Mouse Monoclonal Antibody

**Isotype:** IgG1

**Form:** Liquid

**Tested applications:** WB, IHC-F, IHC-P, ICC/IF

**Dilution Ratio:** WB: 1:5000-1:20000; IHC: 1:50-1:200; IF: 1:50-1:200

**Species reactivity:** Human, Mouse, Rat, Monkey, Dog, Chicken, Hamster, Rabbit, Insect

**Host Species:** Mouse

**Purity:** Affinity purification

### Immunogen Information:

**Immunogen:** Synthetic Peptide of  $\beta$ -actin

**Calculated molecular weight:** 42kDa

**Observed molecular weight:** 42kDa

**Swiss Prot:** P60709

**Gene ID (NCBI):** 60

**Alternative Names:** ACTIN; ACTB; BETA-ACTIN; beta actin; actin beta

### Storage:

Store at 4°C short term. Aliquot and store at -20°C long term. Avoid freeze/thaw cycles.

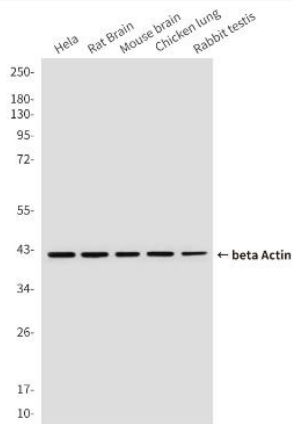
Buffer: PBS with 0.02% sodium azide, 50% glycerol, pH7.3.

### Services & Support:

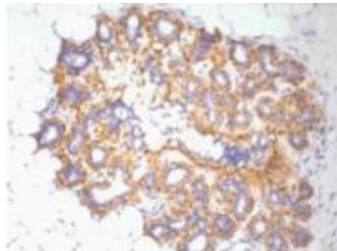
- 1、Please do not hesitate to contact us if you have any questions.
- 2、Please fill in the Technical Support Request Form and email the form to support@yfxbio.com within 3months of receipt of the goods, and we will response to your inquiry within 24 hours.
- 3、The after-sale service channel will be shut down after 3 months.
- 4、Product has not been fully validated for medical applications. For research use only.

### Application:

The application notes include recommended starting dilutions; optimal dilutions/concentrations should be determined by the end user.



Western blot analysis of beta Actin in HeLa, rat brain, mouse brain, Chicken lung and Rabbit testis using Anti-beta Actin Mouse Monoclonal Antibody.



Immunohistochemistry analysis of paraffin-embedded Human ovary tissue using beta Actin antibody. High-pressure and temperature Sodium Citrate pH 6.0 was used for antigen retrieval.