

Anti-beta Tubulin Mouse Monoclonal Antibody

Catalog Number: YFMA0053; Size: 100 μ L

Background:

Tubulin is the major constituent of microtubules. It binds two moles of GTP, one at an exchangeable site on the beta chain and one at a non-exchangeable site on the alpha chain.

Product Information:

Product name: Anti-beta Tubulin Mouse Monoclonal Antibody

Isotype: IgG1

Form: Liquid

Tested applications: WB, IHC-F, IHC-P, ICC/IF

Dilution Ratio: WB: 1:5000-1:20000; IHC: 1:50-1:200; IF: 1:100-1:200

Species reactivity: Human, Mouse, Rat, Monkey, Dog, Chicken, Hamster, Rabbit, Sheep, Insect, Yeast

Host Species: Mouse

Purity: Affinity purification

Immunogen Information:

Immunogen: Synthetic Peptide of β -tubulin

Calculated molecular weight: 50kDa

Observed molecular weight: 55kDa

Swiss Prot: P07437

Gene ID : 203068

Alternative Names: Beta 4 tubulin; TBB5; TUBB2; TUBB2A; tubulin beta 2A; beta tubulin; tubulin beta chain

Storage:

Store at 4°C short term. Aliquot and store at -20°C long term. Avoid freeze/thaw cycles.

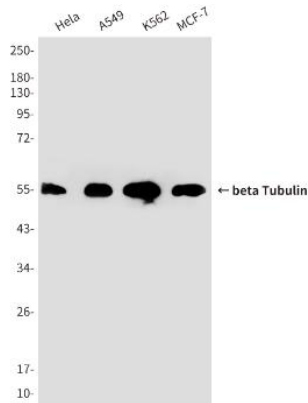
Buffer: PBS with 0.02% sodium azide, 50% glycerol, pH7.3.

Services & Support:

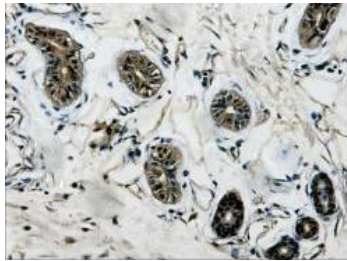
- 1、 Please do not hesitate to contact us if you have any questions.
- 2、 Please fill in the Technical Support Request Form and email the form to support@yfxbio.com within 3months of receipt of the goods, and we will response to your inquiry within 24 hours.
- 3、 The after-sale service channel will be shut down after 3 months.
- 4、 Product has not been fully validated for medical applications. For research use only.

Application:

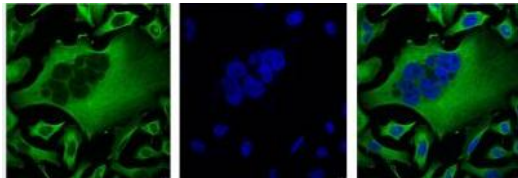
The application notes include recommended starting dilutions; optimal dilutions/concentrations should be determined by the end user.



Western blot analysis of β Tubulin in HeLa, A549, K562, MCF-7 lysates using beta Tubulin Mouse Monoclonal Antibody.



Immunohistochemistry analysis of paraffin-embedded Human colon tissue using beta Tubulin Mouse Monoclonal Antibody. High-pressure and temperature Sodium Citrate pH 6.0 was used for antigen retrieval.



Immunofluorescence analysis of beta Tubulin in HeLa using beta Tubulin Mouse Monoclonal Antibody(Left) and DAPI (Right) .