

Anti-beta Actin Rabbit Polyclonal Antibody

Catalog Number: YFPA1596; Size: 100 μ L

Background:

beta-Actin is one of six different actin isoforms that have been identified. The actin molecules found in cells of various species and tissues tend to be very similar in their immunological and physical properties. Therefore, Antibodies against beta-Actin are useful as loading controls for Western Blotting. However it should be noted that levels of beta-Actin may not be stable in certain cells. For example, expression of beta-Actin in adipose tissue is very low and therefore it should not be used as loading control for these tissues.

Product Information:

Product name: Anti-beta Actin Rabbit Polyclonal Antibody

Isotype: IgG

Form: Liquid

Tested applications: WB, IHC-P, ICC/IF

Dilution Ratio: WB: 1:1000-1:10000; IHC: 1:50-1:200; IF: 1:100-1:200

Species reactivity: Human, Mouse, Rat

Host Species: Rabbit

Purity: Affinity purification

Immunogen Information:

Immunogen: A synthesized peptide derived from human beta Actin

Calculated molecular weight: 42kDa

Observed molecular weight: 42kDa

Swiss Prot: P60709

Gene ID (NCBI): 60

Alternative Names: ACTIN; ACTB; BETA-ACTIN; beta actin; actin beta

Storage:

Store at 4°C short term. Aliquot and store at -20°C long term. Avoid freeze/thaw cycles.

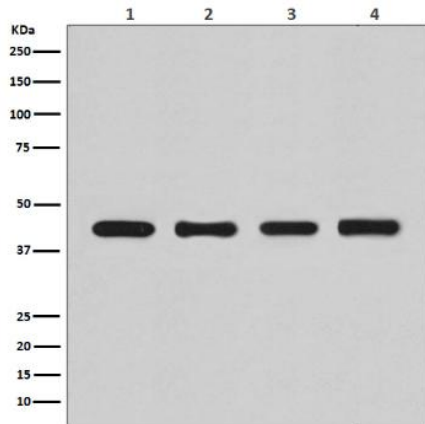
Buffer: PBS with 0.02% sodium azide, 50% glycerol, pH7.3.

Services & Support:

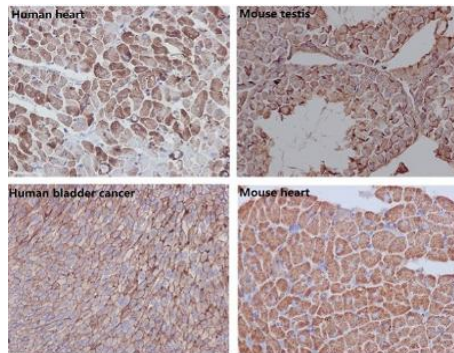
- 1、Please do not hesitate to contact us if you have any questions.
- 2、Please fill in the Technical Support Request Form and email the form to support@yfxbio.com within 3months of receipt of the goods, and we will response to your inquiry within 24 hours.
- 3、The after-sale service channel will be shut down after 3 months.
- 4、Product has not been fully validated for medical applications. For research use only.

Application:

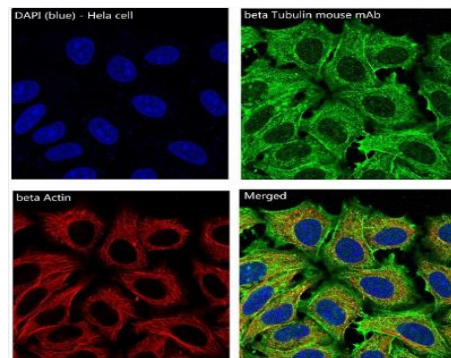
The application notes include recommended starting dilutions; optimal dilutions/concentrations should be determined by the end user.



Western blot analysis of beta Actin in (1)HeLa lysates;
 (2)Human fetal kidney lysates; (3) NIH/3T3 lysates;
 (4) PC-12 lysates using beta Actin Rabbit Polyclonal
 Antibody.



Immunohistochemistry analysis of paraffin-embedded (1)
 Human heart; (2) mouse testis; (3) Human bladder cancer;
 (4) mouse heart using beta Actin Rabbit Polyclonal
 Antibody. High-pressure and temperature Sodium Citrate pH
 6.0 was used for antigen retrieval.



Immunofluorescence analysis of beta Actin in HeLa using
 beta Actin Rabbit Polyclonal Antibody.